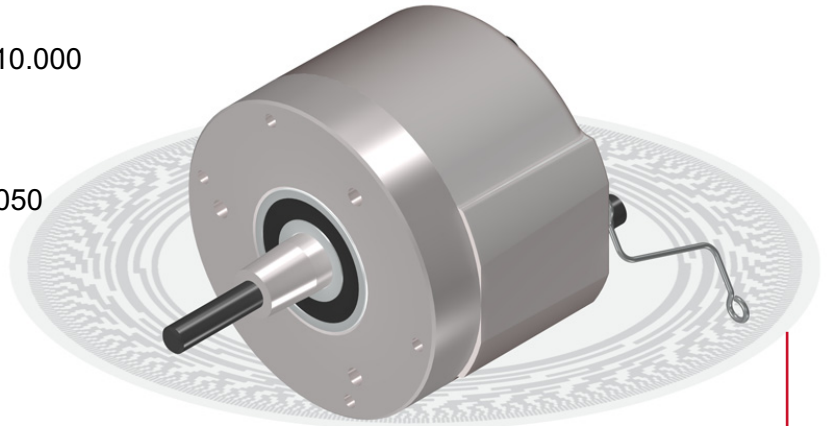


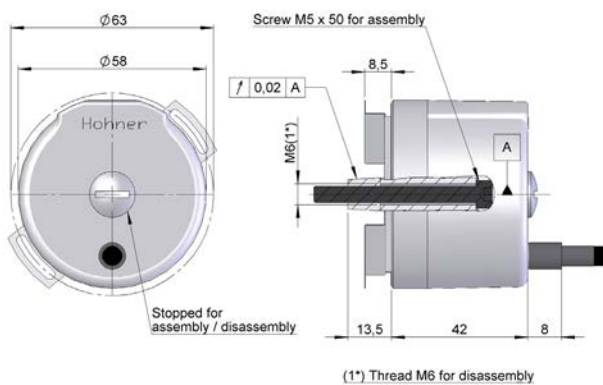
SERIE 64

CONIC SHAFT INCREMENTAL ENCODER FOR INDUSTRIAL APPLICATIONS

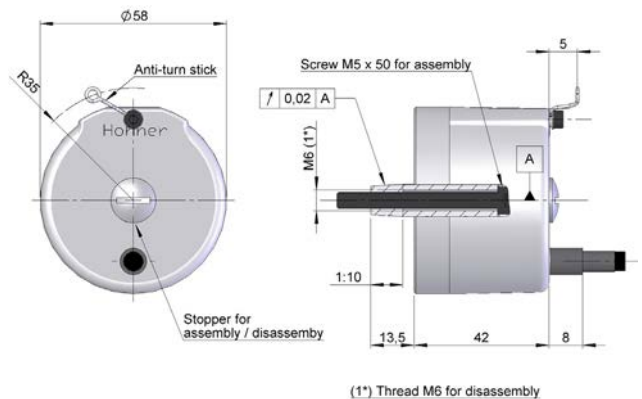
- Any number of pulses available from 1 to 10.000 pulses
- External diameter 58 mm
- Conic shaft 1:10
- Protection class IP54 according to DIN 40050
- Connection by cable (any cable length available) or industrial connector



Antirotation for elastic flange



Antirotation bar



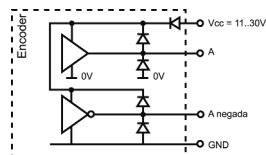
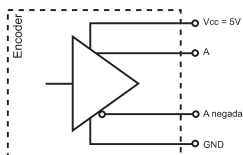
Previous mounting and installation of the encoder is recommended to read the section "TECHNICAL CONSIDERATIONS".

MECHANICAL SPECIFICATIONS

Housing	Aluminium.
Shaft	Stainless Steel.
Bearings	Ballraces.
Bearings lifetime	1x10 ¹⁰ rev.
Maximum number of revolutions permitted mechanically	6000 rpm.
Protection against dust and splashes according to DIN 40050	IP54.
Rotor inertia moment	30 gcm ² .
Starting torque at 20°C (68°F) ,	Max. / 2,0 Ncm.
Maximum load permitted on axial shaft	40 N.
Maximum load permitted on radial shaft	60 N.
Weight aprox.	0,5 Kg.
Operating temperature range	-20°C to +80°C.
Vibration	100 m/s ² (10Hz...2000Hz).
Shock	1000 m/s ² (6ms).
Maximum pulses per turn	10.000.
Axial or radial connection	Cable 2 metres or industrial connector (other cable lengths available on order)

ELECTRICAL SPECIFICATIONS

OUTPUT SIGNALS



	RS422 (TTL compatible)	Push-Pull Differential
Power supply	5 V ±5%	11...30 V
Consumption	Typical: 70 mA Max: 150 mA	Typical: 45 mA Max: 150 mA
Max. load capability	±20 mA	±30 mA
Length of cable allowed	1200 m	100 m
"Low" signal level	$V_{OL} < 0,5 V$	$V_{OL} < 2,5 V$
"High" signal level	$V_{OH} > 2,5 V$	$V_{OH} > V_{cc} - 3 V$
Frequency	300 kHz	200 kHz
Short circuit protection	Yes	Yes
Protection against polarity inversion	No	Yes
Channel B leads (90° electric) channel A		

CONNECTION



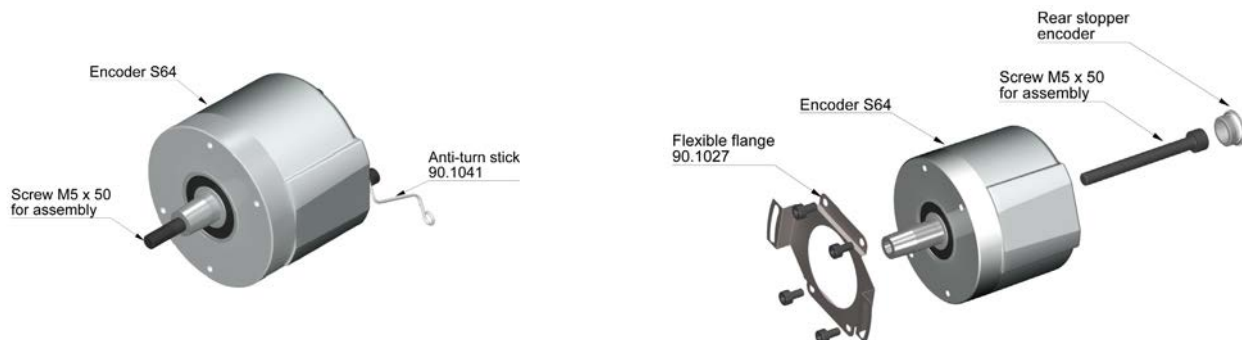
Cable 3x2x0,14+2x0,34

GND	Black
Vcc	Red
A	Yellow
B	Green
A inverted	Brown
B inverted	Blue
0 (reference)	Grey
0 inverted	Orange

ORDERING CODE

SERIE	SHAFT	ANTIROTATION SYSTEM	OUTPUT SIGNALS	CONNECTION	ELECTRONIC OUTPUT	PULSES NUMBER	SPECIAL CUSTOMER
64	● 1- Conic 1:10	● ↓ 1- Elastic flange 90.1027 2- Antirotation bar 90.1041 3- None	● 1- A \tilde{A} + B \tilde{B} + 0 $\tilde{0}$ 1- A \tilde{A} + B \tilde{B}	● 1- Axial cable	● 1- Differential line driver. Push-Pull 11..30V 2- Standard RS422. 5V. Compatible TTL	●●●●●●●●	●●●●●●●●

ACCESSORIES



All the accessories available in the sections "SIGNAL CONDITIONERS" and "MOUNTING ACCESSORIES".